

EBONY COURTS I

AN ICONIC DEVELOPMENT OF 64
CONTEMPORARY APARTMENTS SET OFF
ENTEBBE ROAD



THE DEVELOPMENT

EBONY COURTS I IS A CAREFULLY PROPORTIONED DEVELOPMENT, BRINGING TOGETHER OUTSTANDING DESIGN AND ADVANCED CONSTRUCTION. BUILT AND LANDSCAPED TO HIGH STANDARDS, EBONY COURTS I AIMS TO CREATE A SENSE OF LOCALISED IDENTITY FOR ITS RESIDENTS. IT OFFERS A MIX OF TWO AND FOUR BEDROOM MODERN APARTMENTS WHICH ARE FINISHED TO A HIGH SPECIFICATION, WITH LARGE KITCHENS, STYLISH BATHROOMS AND SPACIOUS BRIGHT INTERIORS. ALL APARTMENTS IN THE DEVELOPMENT HAVE BEEN CAREFULLY PLANNED TO ENSURE PRIVACY AND TO MAINTAIN VIEWS OUT OVER THE LANDSCAPE.

LANDSCAPING

THE COMMUNAL GARDENS ARE CONCEIVED AS OPEN, GENTLY SLOPING LAWNS WITH DENSELY PLANTED AREAS OF TROPICAL PLANTS AND TREES ESTABLISHING AN ATTRACTIVE SETTING. THEY ARE SHARED, SAFE, COMMUNITY SPACES AND WITH INCORPORATED PLAY AREAS INTENDED TO PROVIDE TRANQUIL AND RELAXING AREAS FOR RESIDENTS. ADDITIONALLY, THE DEVELOPMENT WILL ALSO INCLUDE TENNIS COURTS AND A MULTI-USE GAMES AREA INCORPORATING A 5-A-SIDE FOOTBALL PITCH AND A BASKETBALL COURT.

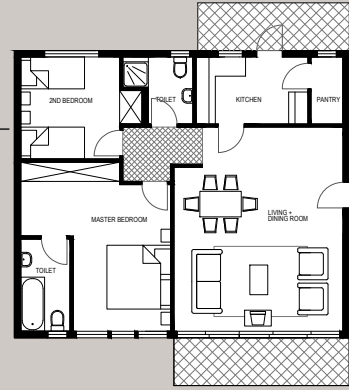
SITE SERVICES

THE SITE IS PLANNED AS A PRIVATE GATED COMMUNITY WITH A HIGH LEVEL OF SECURITY PROVIDED AT THE PERIMETER OF THE SITE. WATER FOR EACH HOUSE IS TO BE STORED IN INDIVIDUAL TANKS PROVIDING A SUFFICIENT RESERVE FOR EACH PROPERTY SHOULD THE SUPPLY BE INTERRUPTED. ELECTRIC POWER WILL BE PROVIDED VIA MAINS SUPPLY.

FLAT TYPES

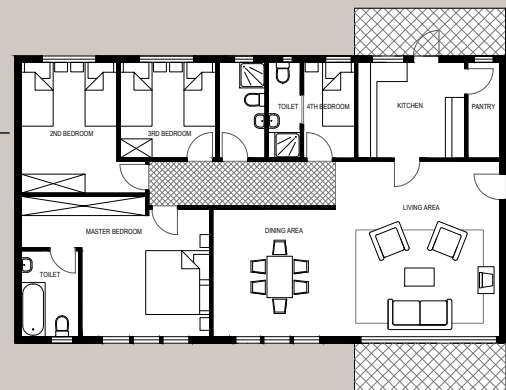
TYPE 1 2 BEDROOM

- 2 BED ROOMS
- 2 BATHROOMS
- KITCHEN + PANTRY
- LIVING + DINING ROOM
- 2 BALCONIES

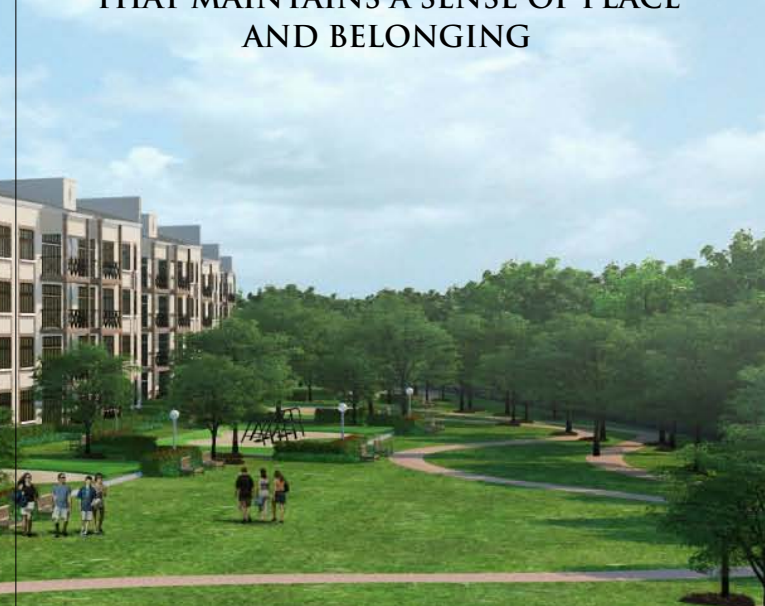


TYPE 2 4 BEDROOM

- 2 BED ROOMS
- 2 BATHROOMS
- KITCHEN + PANTRY
- LIVING + DINING ROOM
- 2 BALCONIES



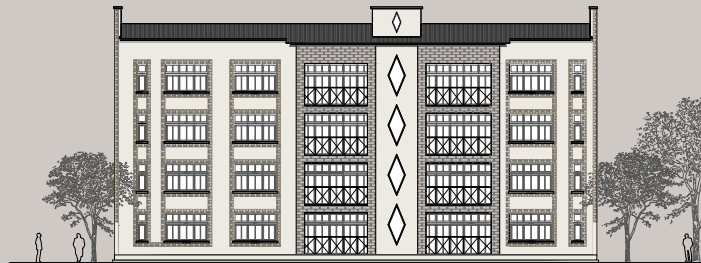
EBONY COURTS I



CONTEMPORARY BUILDING DESIGN
THAT MAINTAINS A SENSE OF PLACE
AND BELONGING

BLOCK TYPE A

4 x 2 BEDROOM APARTMENTS
4 x 4 BEDROOM APARTMENTS



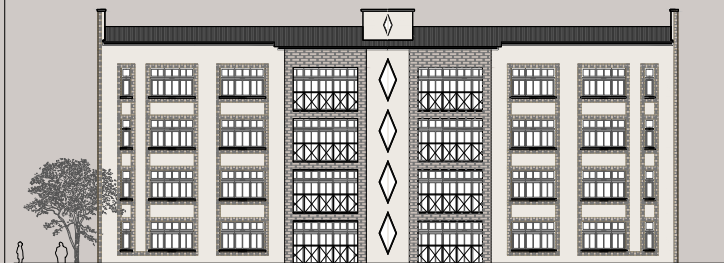
FRONT ELEVATION



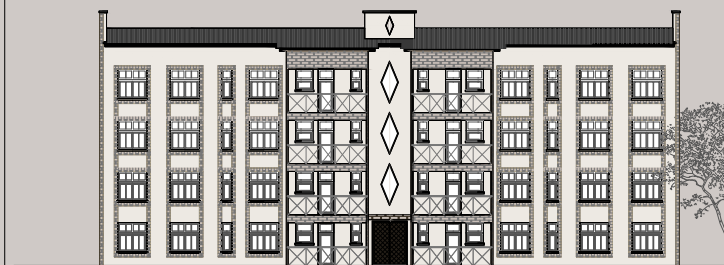
BACK ELEVATION

BLOCK TYPE B

8 x 4 BEDROOM APARTMENTS



FRONT ELEVATION



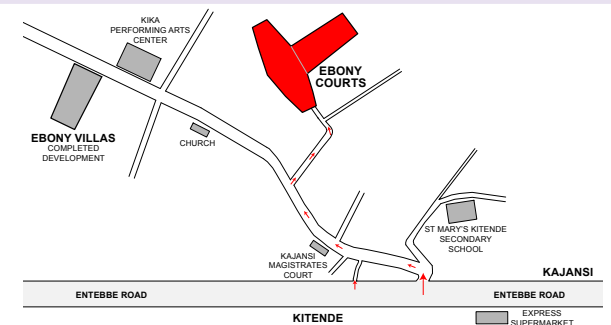
BACK ELEVATION

EBONY COURTS

ENTEBBE ROAD, KITENDE
DUNDI SISSA, WAKISO DISTRICT, UGANDA

UG TEL: +256773033578 UK TEL: +447944169605
+256705731605 +447905004547

EMAIL: SALES@EBONYCOURTS.COM
WEBSITE: WWW.EBONYCOURTS.COM



BOOKING FEE AT 5%

FINANCING AVAILABLE FROM:

STANBIC BANK

DFCU BANK

HOUSING FINANCE BANK

DEVELOPER

NILE CONSTRUCTION GENERAL CONTRACTOR IS A PRIVATE RESIDENTIAL DEVELOPMENT COMPANY, OPERATING IN EAST AFRICA. IT BRINGS TOGETHER THE SKILLS OF PROFESSIONAL AND EXPERIENCED CHARTERED ARCHITECTS AND BUILDERS TO DELIVER APARTMENTS AND HOMES OF THE HIGHEST QUALITY, IN THE BEST LOCATIONS.

